

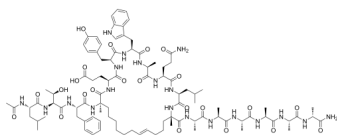
Sulanemadlin

Cat. No.: HY-P4210
Batch No.: 263884
CAS No.: 1451199-98-6
Molecular Formula: C₉₅H₁₄₀N₂₀O₂₃

ANALYTICAL DATA

Theoretical: C(-), H(-), N(-), Peptide Content(≥60.0%)
Result: C(55.20%), H(6.32%), N(13.94%), Peptide Content(96.10%)

Chemical Structure:



Caution: Product has not been fully validated for medical applications. For research use only.

Tel: 609-228-6898

Fax: 609-228-5909

E-mail: tech@MedChemExpress.com

Address: 1 Deer Park Dr, Suite Q, Monmouth Junction, NJ 08852, USA