

## H-Gly-Ala-Hyp-OH

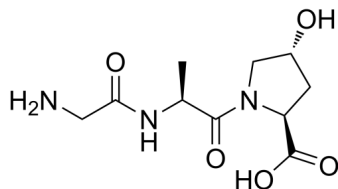
---

Cat. No.: HY-P4231  
Batch No.: 292614  
CAS No.: 22028-81-5  
Molecular Formula: C<sub>10</sub>H<sub>17</sub>N<sub>3</sub>O<sub>5</sub>

### ANALYTICAL DATA

Theoretical: C(-), H(-), N(-), Peptide Content(≥60.0%)  
Result: C(41.33%), H(6.92%), N(14.78%), Peptide Content(91.20%)

Chemical Structure:



**Caution: Product has not been fully validated for medical applications. For research use only.**

Tel: 609-228-6898

Fax: 609-228-5909

E-mail: [tech@MedChemExpress.com](mailto:tech@MedChemExpress.com)

Address: 1 Deer Park Dr, Suite Q, Monmouth Junction, NJ 08852, USA