

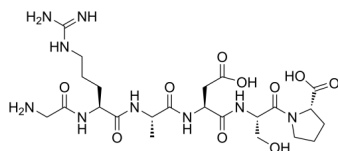
H-Gly-Arg-Ala-Asp-Ser-Pro-OH

Cat. No.: HY-P4232
Batch No.: 314321
CAS No.: 99896-86-3
Molecular Formula: C₂₃H₃₉N₉O₁₀

ANALYTICAL DATA

Theoretical: C(-), H(-), N(-), Peptide Content(≥60.0%)
Result: C(41.85%), H(6.66%), N(19.65%), Peptide Content(93.8%)

Chemical Structure:



Caution: Product has not been fully validated for medical applications. For research use only.

Tel: 609-228-6898

Fax: 609-228-5909

E-mail: tech@MedChemExpress.com

Address: 1 Deer Park Dr, Suite Q, Monmouth Junction, NJ 08852, USA