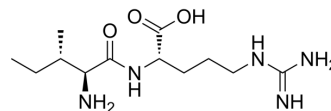


L-Isoleucyl-L-arginine

| | |
|----------------------|---|
| Cat. No.: | HY-P4257 |
| CAS No.: | 55715-01-0 |
| Molecular Formula: | C ₁₂ H ₂₅ N ₅ O ₃ |
| Molecular Weight: | 287.36 |
| Sequence: | Ile-Arg |
| Sequence Shortening: | IR |
| Target: | Angiotensin-converting Enzyme (ACE) |
| Pathway: | Metabolic Enzyme/Protease |
| Storage: | Please store the product under the recommended conditions in the Certificate of Analysis. |



BIOLOGICAL ACTIVITY

Description

L-Isoleucyl-L-arginine is a dipeptide formed from L-isoleucine and L-arginine residues. L-Isoleucyl-L-arginine is a potent angiotensin-converting enzyme (ACE) inhibitor. L-Isoleucyl-L-arginine can be used for research of hypertension^[1].

REFERENCES

[1]. Seok CK, et, al. Purification and molecular docking study of angiotensin I-converting enzyme (ACE) inhibitory peptides from hydrolysates of marine sponge *Stylotella aurantium*. *Process Biochemistry*. 2017,54:180-7.

Caution: Product has not been fully validated for medical applications. For research use only.

Tel: 609-228-6898

Fax: 609-228-5909

E-mail: tech@MedChemExpress.com

Address: 1 Deer Park Dr, Suite Q, Monmouth Junction, NJ 08852, USA