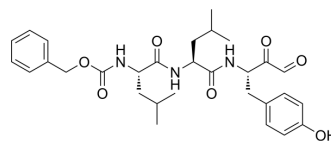


Z-Leu-Leu-Tyr-COCHO

| | |
|----------------------|---|
| Cat. No.: | HY-P4291 |
| CAS No.: | 204649-66-1 |
| Molecular Formula: | C ₃₀ H ₃₉ N ₃ O ₇ |
| Molecular Weight: | 553.65 |
| Sequence: | {Cbz}-Leu-Leu-Tyr-{COCHO} |
| Sequence Shortening: | {Cbz}-LLY-{COCHO} |
| Target: | Proteasome |
| Pathway: | Metabolic Enzyme/Protease |
| Storage: | Please store the product under the recommended conditions in the Certificate of Analysis. |



BIOLOGICAL ACTIVITY

| | |
|-------------|---|
| Description | Z-Leu-Leu-Tyr-COCHO is a potent chymotrypsin-like activity inhibitor with a K _i value of 3.0 nM ^[1] . |
|-------------|---|

REFERENCES

[1]. Lynas JF, et, al. Inhibitors of the chymotrypsin-like activity of proteasome based on di- and tri-peptidyl alpha-keto aldehydes (glyoxals). Bioorg Med Chem Lett. 1998 Feb 17;8(4):373-8.

Caution: Product has not been fully validated for medical applications. For research use only.

Tel: 609-228-6898

Fax: 609-228-5909

E-mail: tech@MedChemExpress.com

Address: 1 Deer Park Dr, Suite Q, Monmouth Junction, NJ 08852, USA