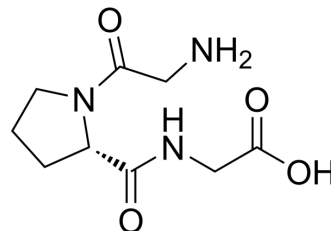


## H-Gly-Pro-Gly-OH

Cat. No.:	HY-P4294
CAS No.:	2441-63-6
Molecular Formula:	C <sub>9</sub> H <sub>15</sub> N <sub>3</sub> O <sub>4</sub>
Molecular Weight:	229.23
Sequence:	H-Gly-Pro-Gly-OH
Sequence Shortening:	GPG
Target:	Amino Acid Derivatives
Pathway:	Others
Storage:	Please store the product under the recommended conditions in the Certificate of Analysis.



### BIOLOGICAL ACTIVITY

#### Description

H-Gly-Pro-Gly-OH is a tripeptide containing glycine and proline. H-Gly-Pro-Gly-OH can be used for the synthesis of other polypeptides, such as (Pro Gly Gly)<sub>n</sub><sup>[1][2]</sup>.

### REFERENCES

[1]. Paizs B, et al. Fragmentation pathways of protonated peptides. Mass Spectrom Rev. 2005 Jul-Aug;24(4):508-48.

[2]. Kricheldorf H R, et al. 15N NMR spectroscopy 14. Neighboring residue effects in glycine-containing polypeptides[J]. Die Makromolekulare Chemie: Macromolecular Chemistry and Physics, 1979, 180(1): 161-174.

**Caution: Product has not been fully validated for medical applications. For research use only.**

Tel: 609-228-6898

Fax: 609-228-5909

E-mail: tech@MedChemExpress.com

Address: 1 Deer Park Dr, Suite Q, Monmouth Junction, NJ 08852, USA