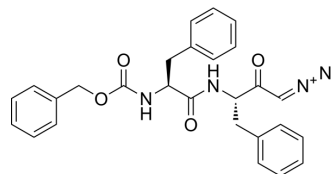


Z-Phe-Phe-Diazomethylketone

Cat. No.:	HY-P4306
CAS No.:	65178-14-5
Molecular Formula:	C ₂₇ H ₂₆ N ₄ O ₄
Molecular Weight:	470.52
Sequence:	Phe-[Phe-Diazomethylketone}
Sequence Shortening:	F-{Phe-Diazomethylketone}
Target:	Cathepsin
Pathway:	Metabolic Enzyme/Protease
Storage:	Please store the product under the recommended conditions in the Certificate of Analysis.



BIOLOGICAL ACTIVITY

Description	Z-Phe-Phe-Diazomethylketone is a selective inhibitor of cathepsin L ^[1] .
IC ₅₀ & Target	cathepsin L

REFERENCES

[1]. R D Geisert, et al. Characterization and proteolytic activity of a cathepsin L-like polypeptide in endometrium and uterine flushings of cycling, pregnant and steroid-treated ovariectomized gilts. *Reprod Fertil Dev.* 1997;9(4):395-402.

Caution: Product has not been fully validated for medical applications. For research use only.

Tel: 609-228-6898

Fax: 609-228-5909

E-mail: tech@MedChemExpress.com

Address: 1 Deer Park Dr, Suite Q, Monmouth Junction, NJ 08852, USA