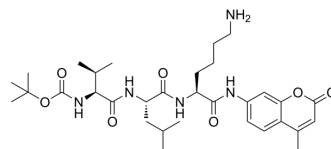


Boc-Val-Leu-Lys-AMC

| | |
|----------------------|---|
| Cat. No.: | HY-P4310 |
| CAS No.: | 73554-84-4 |
| Molecular Formula: | C ₃₂ H ₄₉ N ₅ O ₇ |
| Molecular Weight: | 615.76 |
| Sequence: | {Boc-Val}-Leu-{Lys-AMC} |
| Sequence Shortening: | {Boc-Val}-L-{Lys-AMC} |
| Target: | Others |
| Pathway: | Others |
| Storage: | Please store the product under the recommended conditions in the Certificate of Analysis. |



BIOLOGICAL ACTIVITY

| | |
|---------------------------|---|
| Description | Boc-Val-Leu-Lys-AMC is a sensitive, fluorogenic, and specific substrate of plasmin, as well as acrosin from the ascidian <i>Halocynthia roretzi</i> , porcine calpain isozymes I and II, and papain ^{[1][2][3][4]} . |
| IC ₅₀ & Target | others |

REFERENCES

- [1]. T Sasaki, et al. Comparative specificity and kinetic studies on porcine calpain I and calpain II with naturally occurring peptides and synthetic fluorogenic substrates. *J Biol Chem.* 1984 Oct 25;259(20):12489-94.
- [2]. H Kato, et al. New fluorogenic peptide substrates for plasmin. *J Biochem.* 1980 Jul;88(1):183-90.
- [3]. R E Smith, et al. Direct photometric or fluorometric assay of proteinases using substrates containing 7-amino-4-trifluoromethylcoumarin. *Thromb Res.* 1980 Feb;17(3-4):393-402.

Caution: Product has not been fully validated for medical applications. For research use only.

Tel: 609-228-6898

Fax: 609-228-5909

E-mail: tech@MedChemExpress.com

Address: 1 Deer Park Dr, Suite Q, Monmouth Junction, NJ 08852, USA