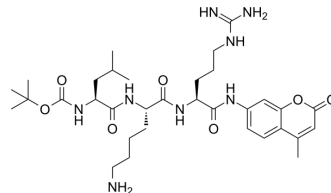


## Boc-Leu-Lys-Arg-AMC

Cat. No.:	HY-P4312
CAS No.:	109358-47-6
Molecular Formula:	C <sub>33</sub> H <sub>52</sub> N <sub>8</sub> O <sub>7</sub>
Molecular Weight:	672.82
Sequence:	{Boc-Leu}-Lys-{Arg-AMC}
Sequence Shortening:	{Boc-Leu}-K-{Arg-AMC}
Target:	Others
Pathway:	Others
Storage:	Please store the product under the recommended conditions in the Certificate of Analysis.



### BIOLOGICAL ACTIVITY

Description	Boc-Leu-Lys-Arg-AMC is a fluorogenic substrate for the Kex2 endoprotease <sup>[1]</sup> .
IC <sub>50</sub> & Target	others

### REFERENCES

[1]. Jean-Pierre Falguyret, et al. An activity-based probe for the determination of cysteine cathepsin protease activities in whole cells. *Anal Biochem.* 2004 Dec 15;335(2):218-27.

**Caution: Product has not been fully validated for medical applications. For research use only.**

Tel: 609-228-6898

Fax: 609-228-5909

E-mail: tech@MedChemExpress.com

Address: 1 Deer Park Dr, Suite Q, Monmouth Junction, NJ 08852, USA