

## Dansyl-Gly-Cys-Val-Leu-Ser (TFA)

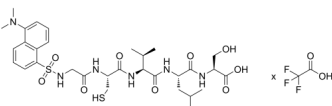
---

Cat. No.: HY-P4337A  
Batch No.: 345533  
Molecular Formula: C<sub>31</sub>H<sub>46</sub>N<sub>6</sub>O<sub>9</sub>S<sub>2</sub>·xC<sub>2</sub>HF<sub>3</sub>O<sub>2</sub>

### ANALYTICAL DATA

Theoretical: C(-), H(-), N(-), Peptide Content(≥60.0%)  
Result: C(48.19%), H(6.06%), N(10.61%), Peptide Content(89.8%)

Chemical Structure:



**Caution: Product has not been fully validated for medical applications. For research use only.**

Tel: 609-228-6898

Fax: 609-228-5909

E-mail: tech@MedChemExpress.com

Address: 1 Deer Park Dr, Suite Q, Monmouth Junction, NJ 08852, USA