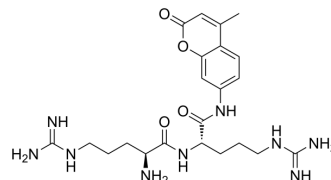


## Arg-Arg-AMC

Cat. No.:	HY-P4340
CAS No.:	263843-55-6
Molecular Formula:	C <sub>22</sub> H <sub>33</sub> N <sub>9</sub> O <sub>4</sub>
Molecular Weight:	487.56
Sequence:	Arg-Arg-{AMC}
Sequence Shortening:	RR-{AMC}
Target:	Cathepsin
Pathway:	Metabolic Enzyme/Protease
Storage:	Please store the product under the recommended conditions in the Certificate of Analysis.



### BIOLOGICAL ACTIVITY

Description	Arg-Arg-AMC is a highly selective substrate of Cathepsin B. Arg-Arg-AMC can be used to cathepsin B activity assay in cancer cells, while cathepsin B is associated with cell invasive and metastatic phenotype in numerous types of cancer <sup>[1]</sup> .
IC <sub>50</sub> & Target	Cathepsin B <sup>[1]</sup>

### REFERENCES

[1]. Hulkower KI, et al. Fluorescent microplate assay for cancer cell-associated cathepsin B. Eur J Biochem. 2000 Jul;267(13):4165-70.

**Caution: Product has not been fully validated for medical applications. For research use only.**

Tel: 609-228-6898

Fax: 609-228-5909

E-mail: tech@MedChemExpress.com

Address: 1 Deer Park Dr, Suite Q, Monmouth Junction, NJ 08852, USA