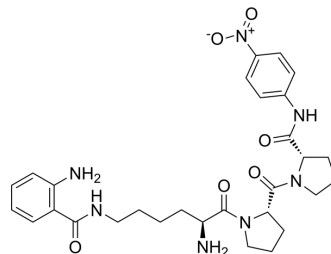


## Lys(Abz)-Pro-Pro-pNA

Cat. No.:	HY-P4343
CAS No.:	219138-18-8
Molecular Formula:	C <sub>29</sub> H <sub>37</sub> N <sub>7</sub> O <sub>6</sub>
Molecular Weight:	579.65
Sequence:	{Lys(Abz)}-Pro-Pro-{pNA}
Sequence Shortening:	{Lys(Abz)}-PP-{pNA}
Target:	Others
Pathway:	Others
Storage:	Please store the product under the recommended conditions in the Certificate of Analysis.



### BIOLOGICAL ACTIVITY

Description	Lys(Abz)-Pro-Pro-pNA is a fluorescent peptide substrate of PepP <sup>[1]</sup> .
-------------	--

### REFERENCES

[1]. Baik AS, et, al. Characterization of Aminopeptidase P from the Unicellular Cyanobacterium Synechocystis sp. PCC6803. Dokl Biochem Biophys. 2018 Jul;481(1):190-194.

**Caution: Product has not been fully validated for medical applications. For research use only.**

Tel: 609-228-6898

Fax: 609-228-5909

E-mail: tech@MedChemExpress.com

Address: 1 Deer Park Dr, Suite Q, Monmouth Junction, NJ 08852, USA