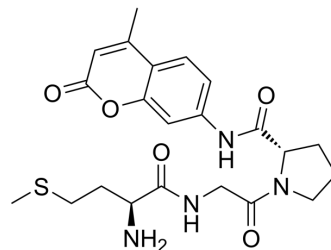


Met-Gly-Pro-AMC

Cat. No.:	HY-P4344
CAS No.:	1926163-52-1
Molecular Formula:	C ₂₂ H ₂₈ N ₄ O ₅ S
Molecular Weight:	460.55
Sequence:	Met-Gly-Pro-{AMC}
Sequence Shortening:	MGP-{AMC}
Target:	MetAP
Pathway:	Metabolic Enzyme/Protease
Storage:	Sealed storage, away from moisture
	Powder -80°C 2 years
	-20°C 1 year



* In solvent : -80°C, 6 months; -20°C, 1 month (sealed storage, away from moisture)

SOLVENT & SOLUBILITY

In Vitro

H₂O : 28 mg/mL (60.80 mM; Need ultrasonic)

Preparing Stock Solutions	Solvent Concentration	Mass		
		1 mg	5 mg	10 mg
	1 mM	2.1713 mL	10.8566 mL	21.7132 mL
	5 mM	0.4343 mL	2.1713 mL	4.3426 mL
	10 mM	0.2171 mL	1.0857 mL	2.1713 mL

Please refer to the solubility information to select the appropriate solvent.

BIOLOGICAL ACTIVITY

Description

Met-Gly-Pro-AMC is a fluorescent peptide substrate of MetAP2^[1].

REFERENCES

[1]. Ng JY, et, al. Tyrosine nitration moderates the peptidase activity of human methionyl aminopeptidase 2. *Biochem Biophys Res Commun*. 2013 Oct 11;440(1):37-42.

Caution: Product has not been fully validated for medical applications. For research use only.

Tel: 609-228-6898

Fax: 609-228-5909

E-mail: tech@MedChemExpress.com

Address: 1 Deer Park Dr, Suite Q, Monmouth Junction, NJ 08852, USA