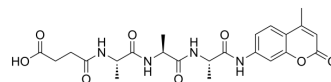


## Suc-Ala-Ala-Ala-AMC

Cat. No.:	HY-P4350
CAS No.:	73617-90-0
Molecular Formula:	C <sub>23</sub> H <sub>28</sub> N <sub>4</sub> O <sub>8</sub>
Molecular Weight:	488.49
Sequence:	{Suc}-Ala-Ala-Ala-{AMC}
Sequence Shortening:	{Suc}-AAA-{AMC}
Target:	Elastase
Pathway:	Metabolic Enzyme/Protease
Storage:	Please store the product under the recommended conditions in the Certificate of Analysis.



### BIOLOGICAL ACTIVITY

Description	Suc-Ala-Ala-Ala-AMC is a peptide substrate of elastase or elastase-like <sup>[1]</sup> .
-------------	--

### REFERENCES

[1]. Pásztor M, et, al. Proteolytic enzyme activities in rat peritoneal exudate. Acta Biol Hung. 1991;42(1-3):285-95.

**Caution: Product has not been fully validated for medical applications. For research use only.**

Tel: 609-228-6898

Fax: 609-228-5909

E-mail: tech@MedChemExpress.com

Address: 1 Deer Park Dr, Suite Q, Monmouth Junction, NJ 08852, USA