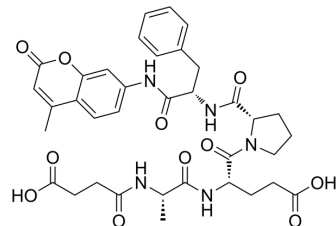


## Suc-AEPF-AMC

Cat. No.:	HY-P4359
CAS No.:	142997-30-6
Molecular Formula:	C <sub>36</sub> H <sub>41</sub> N <sub>5</sub> O <sub>11</sub>
Molecular Weight:	719.74
Sequence:	{Suc}-Ala-Glu-Pro-Phe-{AMC}
Sequence Shortening:	{Suc}-AEPF-{AMC}
Target:	PIN1
Pathway:	PI3K/Akt/mTOR
Storage:	Please store the product under the recommended conditions in the Certificate of Analysis.



### BIOLOGICAL ACTIVITY

Description	Suc-AEPF-AMC is a peptide substrate of Pin1 and Par14 peptidyl prolyl isomerase <sup>[1]</sup> .
-------------	--

### REFERENCES

[1]. Uchida T, et, al. Pin1 and Par14 peptidyl prolyl isomerase inhibitors block cell proliferation. Chem Biol. 2003 Jan;10(1):15-24.

**Caution: Product has not been fully validated for medical applications. For research use only.**

Tel: 609-228-6898

Fax: 609-228-5909

E-mail: tech@MedChemExpress.com

Address: 1 Deer Park Dr, Suite Q, Monmouth Junction, NJ 08852, USA