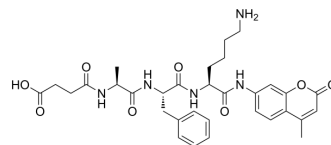


Suc-Ala-Phe-Lys-AMC

Cat. No.:	HY-P4360
CAS No.:	73207-91-7
Molecular Formula:	C ₃₂ H ₃₉ N ₅ O ₈
Molecular Weight:	621.68
Sequence:	{Suc-Ala}-Phe-{Lys-AMC}
Sequence Shortening:	{Suc-Ala}-F-{Lys-AMC}
Target:	Others
Pathway:	Others
Storage:	Sealed storage, away from moisture and light
	Powder -80°C 2 years
	-20°C 1 year



* In solvent : -80°C, 6 months; -20°C, 1 month (sealed storage, away from moisture and light)

SOLVENT & SOLUBILITY

In Vitro

DMSO : 100 mg/mL (160.85 mM; Need ultrasonic)

Concentration	Mass		
	1 mg	5 mg	10 mg
1 mM	1.6085 mL	8.0427 mL	16.0854 mL
5 mM	0.3217 mL	1.6085 mL	3.2171 mL
10 mM	0.1609 mL	0.8043 mL	1.6085 mL

Please refer to the solubility information to select the appropriate solvent.

BIOLOGICAL ACTIVITY

Description

Suc-Ala-Phe-Lys-AMC is a highly sensitive fluorogenic substrate for plasmin. Suc-Ala-Phe-Lys-AMC is also used for assaying gingipain K^{[1][2]}.

IC₅₀ & Target

others

REFERENCES

[1]. P.A Pierzchala, et al. A new fluorogenic substrate for plasmin. *Biochem J.* 1979 Dec 1;183(3):555-9.

[2]. Marion G Götz, et al. Aza-peptidyl Michael Acceptors. A New Class of Potent and Selective Inhibitors of Asparaginyl Endopeptidases (Legumains) from Evolutionarily

Caution: Product has not been fully validated for medical applications. For research use only.

Tel: 609-228-6898

Fax: 609-228-5909

E-mail: tech@MedChemExpress.com

Address: 1 Deer Park Dr, Suite Q, Monmouth Junction, NJ 08852, USA