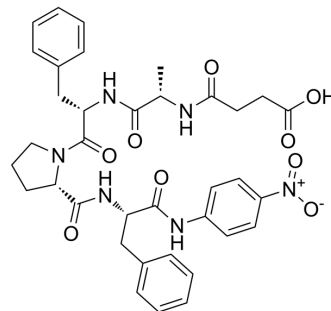


Suc-Ala-Phe-Pro-Phe-pNA

Cat. No.:	HY-P4361
CAS No.:	128802-73-3
Molecular Formula:	C ₃₆ H ₄₀ N ₆ O ₉
Molecular Weight:	700.74
Sequence:	{Suc}-Ala-Phe-Pro-Phe-{pNA}
Sequence Shortening:	{Suc}-AFPF-pNA
Target:	Others
Pathway:	Others
Storage:	Please store the product under the recommended conditions in the Certificate of Analysis.



BIOLOGICAL ACTIVITY

Description	Suc-Ala-Phe-Pro-Phe-pNA is a peptide substrate ^[1] .
-------------	---

REFERENCES

[1]. Hübner D, et al. Peptidyl-prolyl cis-trans isomerase activity as studied by dynamic proton NMR spectroscopy. FEBS Lett. 1991 Jun 17;284(1):79-81.

Caution: Product has not been fully validated for medical applications. For research use only.

Tel: 609-228-6898

Fax: 609-228-5909

E-mail: tech@MedChemExpress.com

Address: 1 Deer Park Dr, Suite Q, Monmouth Junction, NJ 08852, USA