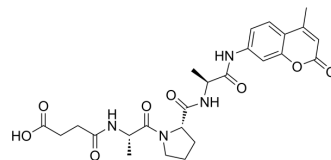


Suc-Ala-Pro-Ala-AMC

Cat. No.:	HY-P4362
CAS No.:	88467-44-1
Molecular Formula:	C ₂₅ H ₃₀ N ₄ O ₈
Molecular Weight:	514.53
Sequence:	{Suc}-Ala-Pro-Ala-{AMC}
Sequence Shortening:	{Suc}-APA-{AMC}
Target:	Elastase
Pathway:	Metabolic Enzyme/Protease
Storage:	Please store the product under the recommended conditions in the Certificate of Analysis.



BIOLOGICAL ACTIVITY

Description	Suc-Ala-Pro-Ala-AMC is a tripeptide substrate of elastase ^[1] .
-------------	--

REFERENCES

[1]. Edwards JV, et, al. Structure/Function Analysis of Cotton-Based Peptide-Cellulose Conjugates: Spatiotemporal/Kinetic Assessment of Protease Aerogels Compared to Nanocrystalline and Paper Cellulose. Int J Mol Sci. 2018 Mar 13;19(3):840.

Caution: Product has not been fully validated for medical applications. For research use only.

Tel: 609-228-6898

Fax: 609-228-5909

E-mail: tech@MedChemExpress.com

Address: 1 Deer Park Dr, Suite Q, Monmouth Junction, NJ 08852, USA