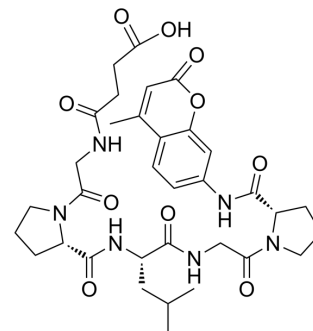


Suc-GPLGP-AMC

| | |
|----------------------|---|
| Cat. No.: | HY-P4363 |
| CAS No.: | 72698-36-3 |
| Molecular Formula: | C ₃₄ H ₄₄ N ₆ O ₁₀ |
| Molecular Weight: | 696.75 |
| Sequence: | {Suc}-Gly-Pro-Leu-Gly-Pro-{AMC} |
| Sequence Shortening: | {Suc}-GPLGP-{AMC} |
| Target: | Others |
| Pathway: | Others |
| Storage: | Please store the product under the recommended conditions in the Certificate of Analysis. |



BIOLOGICAL ACTIVITY

| | |
|-------------|--|
| Description | Suc-GPLGP-AMC is a peptide substrate of collagenase-like peptidases ^[1] . |
|-------------|--|

REFERENCES

[1]. Fajtová p, et, al. Prolyl Oligopeptidase from the Blood Fluke *Schistosoma mansoni*: From Functional Analysis to Anti-schistosomal Inhibitors. *PLoS Negl Trop Dis*. 2015 Jun 3;9(6):e0003827.

Caution: Product has not been fully validated for medical applications. For research use only.

Tel: 609-228-6898

Fax: 609-228-5909

E-mail: tech@MedChemExpress.com

Address: 1 Deer Park Dr, Suite Q, Monmouth Junction, NJ 08852, USA