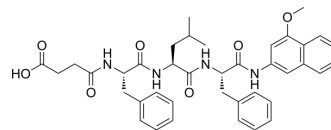


Suc-Phe-Leu-Phe-4MβNA

Cat. No.:	HY-P4364
CAS No.:	201982-89-0
Molecular Formula:	C ₃₉ H ₄₄ N ₄ O ₇
Molecular Weight:	680.79
Sequence:	{Suc}-Phe-Leu-Phe-{4MβNA}
Sequence Shortening:	{Suc}-FLF-{4MβNA}
Target:	Others
Pathway:	Others
Storage:	Please store the product under the recommended conditions in the Certificate of Analysis.



BIOLOGICAL ACTIVITY

Description	Suc-Phe-Leu-Phe-4MβNA is a fluorescent peptide substrate ^[1] .
-------------	---

REFERENCES

[1]. Stanyer L, et al. Inactivation of brain mitochondrial Lon protease by peroxynitrite precedes electron transport chain dysfunction. *Neurochem Int.* 2008 Sep;53(3-4):95-101.

Caution: Product has not been fully validated for medical applications. For research use only.

Tel: 609-228-6898

Fax: 609-228-5909

E-mail: tech@MedChemExpress.com

Address: 1 Deer Park Dr, Suite Q, Monmouth Junction, NJ 08852, USA