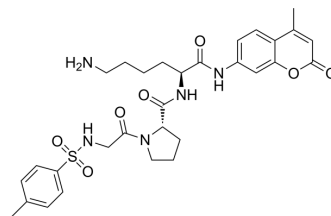


Tos-Gly-Pro-Lys-AMC

Cat. No.:	HY-P4366
CAS No.:	128202-25-5
Molecular Formula:	C ₃₀ H ₃₇ N ₅ O ₇ S
Molecular Weight:	611.71
Sequence:	{Tos}-Gly-Pro-Lys-{AMC}
Sequence Shortening:	{Tos}-GPK-{AMC}
Target:	Ser/Thr Protease
Pathway:	Metabolic Enzyme/Protease
Storage:	Please store the product under the recommended conditions in the Certificate of Analysis.



BIOLOGICAL ACTIVITY

Description	Tos-Gly-Pro-Lys-AMC is a fluorogenic peptide substrate of tryptase ^[1] .
-------------	---

REFERENCES

[1]. Mohammed D, et, al. Variation of stratum corneum biophysical and molecular properties with anatomic site. AAPS J. 2012 Dec;14(4):806-12.

Caution: Product has not been fully validated for medical applications. For research use only.

Tel: 609-228-6898

Fax: 609-228-5909

E-mail: tech@MedChemExpress.com

Address: 1 Deer Park Dr, Suite Q, Monmouth Junction, NJ 08852, USA