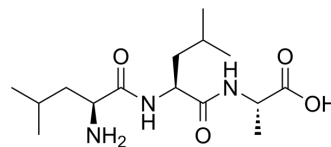


H-Leu-Leu-Ala-OH

Cat. No.:	HY-P4383
CAS No.:	20274-80-0
Molecular Formula:	C ₁₅ H ₂₉ N ₃ O ₄
Molecular Weight:	315.41
Sequence:	H-Leu-Leu-Ala-OH
Sequence Shortening:	LLA
Target:	Others
Pathway:	Others
Storage:	Please store the product under the recommended conditions in the Certificate of Analysis.



BIOLOGICAL ACTIVITY

Description	H-Leu-Leu-Ala-OH is a tripeptide composed of two L-leucine units joined to L-alanine by a peptide linkage. H-Leu-Leu-Ala-OH shows antioxidant activities ^[1] .
-------------	---

REFERENCES

[1]. Mai Tian, et al. Structure-activity relationship of a series of antioxidant tripeptides derived from β -Lactoglobulin using QSAR modeling. Dairy Science & Technology. 2015,95, 451-463.

Caution: Product has not been fully validated for medical applications. For research use only.

Tel: 609-228-6898

Fax: 609-228-5909

E-mail: tech@MedChemExpress.com

Address: 1 Deer Park Dr, Suite Q, Monmouth Junction, NJ 08852, USA