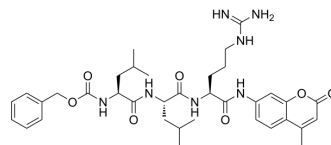


Z-Leu-Leu-Arg-AMC

Cat. No.:	HY-P4390
CAS No.:	90468-17-0
Molecular Formula:	C ₃₆ H ₄₉ N ₇ O ₇
Molecular Weight:	691.82
Sequence:	{Z}-Leu-Leu-Arg-{AMC}
Sequence Shortening:	{Z}-LLR-{AMC}
Target:	Cathepsin
Pathway:	Metabolic Enzyme/Protease
Storage:	Please store the product under the recommended conditions in the Certificate of Analysis.



BIOLOGICAL ACTIVITY

Description	Z-Leu-Leu-Arg-AMC is a peptide substrate of cathepsin S ^[1] .
-------------	--

REFERENCES

[1]. Altmann E, et, al. Novel purine nitrile derived inhibitors of the cysteine protease cathepsin K. J Med Chem. 2004 Nov 18;47(24):5833-6.

Caution: Product has not been fully validated for medical applications. For research use only.

Tel: 609-228-6898

Fax: 609-228-5909

E-mail: tech@MedChemExpress.com

Address: 1 Deer Park Dr, Suite Q, Monmouth Junction, NJ 08852, USA