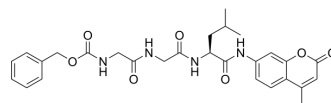


Z-Gly-Gly-Leu-AMC

Cat. No.:	HY-P4399
CAS No.:	97792-39-7
Molecular Formula:	C ₂₈ H ₃₂ N ₄ O ₇
Molecular Weight:	536.58
Sequence:	{Cbz}-Gly-Gly-Leu-{AMC}
Sequence Shortening:	{Cbz}-GGL-{AMC}
Target:	Bacterial; ClpP
Pathway:	Anti-infection; Cell Cycle/DNA Damage
Storage:	Please store the product under the recommended conditions in the Certificate of Analysis.



BIOLOGICAL ACTIVITY

Description	Z-Gly-Gly-Leu-AMC is the substrate of ClpP1 and ClpP2, to detect the enzymatic activity in the presence of the activating peptide Z-Leu-Leu ^[1] .
-------------	--

REFERENCES

[1]. Akopian T, et al. The active ClpP protease from *M. tuberculosis* is a complex composed of a heptameric ClpP1 and a ClpP2 ring. *EMBO J.* 2012 Mar 21;31(6):1529-41.

Caution: Product has not been fully validated for medical applications. For research use only.

Tel: 609-228-6898

Fax: 609-228-5909

E-mail: tech@MedChemExpress.com

Address: 1 Deer Park Dr, Suite Q, Monmouth Junction, NJ 08852, USA