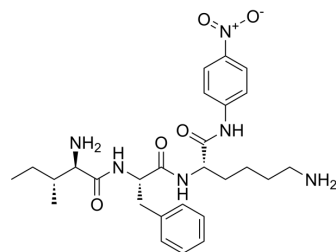


## D-Ile-Phe-Lys-pNA

Cat. No.:	HY-P4402
CAS No.:	76626-41-0
Molecular Formula:	C <sub>27</sub> H <sub>38</sub> N <sub>6</sub> O <sub>5</sub>
Molecular Weight:	526.63
Sequence:	{d-Ile}-Phe-{Lys-pNA}
Sequence Shortening:	{d-Ile}-F-{Lys-pNA}
Target:	Others
Pathway:	Others
Storage:	Please store the product under the recommended conditions in the Certificate of Analysis.



### BIOLOGICAL ACTIVITY

Description	D-Ile-Phe-Lys-pNA is a highly specific substrate for human plasmin <sup>[1][2]</sup> .
IC <sub>50</sub> & Target	others

### REFERENCES

- [1]. G C Szabó, et al. Specificity of pancreatic elastase with tripeptidyl-p-nitroanilide substrates. *Acta Biochim Biophys Acad Sci Hung.* 1980;15(4):263-763.
- [2]. M Pozsgay, et al. Study of the specificity of thrombin with tripeptidyl-p-nitroanilide substrates. *Eur J Biochem.* 1981 Apr;115(3):491-5.

**Caution: Product has not been fully validated for medical applications. For research use only.**

Tel: 609-228-6898

Fax: 609-228-5909

E-mail: tech@MedChemExpress.com

Address: 1 Deer Park Dr, Suite Q, Monmouth Junction, NJ 08852, USA