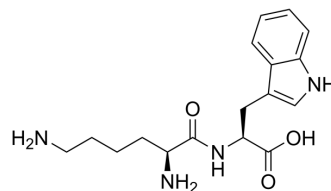


## H-Lys-Trp-OH

|                      |   |
|----------------------|---|
| Cat. No.:            | HY-P4420  |
| CAS No.:             | 50674-18-5  |
| Molecular Formula:   | C <sub>17</sub> H <sub>24</sub> N <sub>4</sub> O <sub>3</sub>                             |
| Molecular Weight:    | 332.4   |
| Sequence:            | H-Lys-Trp-OH  |
| Sequence Shortening: | KW  |
| Target:              | Angiotensin-converting Enzyme (ACE)   |
| Pathway:             | Metabolic Enzyme/Protease   |
| Storage:             | Please store the product under the recommended conditions in the Certificate of Analysis. |



### BIOLOGICAL ACTIVITY

|             |  |
|-------------|--|
| Description | H-Lys-Trp-OH (KW) is an ACE inhibitory peptide with an IC <sub>50</sub> of 7.8 μM <sup>[1]</sup> . |
|-------------|--|

### REFERENCES

[1]. Terashima M, et al. Inhibition strength of short peptides derived from an ACE inhibitory peptide. J Agric Food Chem. 2011 Oct 26;59(20):11234-7.

**Caution: Product has not been fully validated for medical applications. For research use only.**

Tel: 609-228-6898

Fax: 609-228-5909

E-mail: tech@MedChemExpress.com

Address: 1 Deer Park Dr, Suite Q, Monmouth Junction, NJ 08852, USA