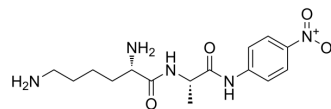


## Lys-Ala-pNA

Cat. No.:	HY-P4468
CAS No.:	115846-24-7
Molecular Formula:	C <sub>15</sub> H <sub>23</sub> N <sub>5</sub> O <sub>4</sub>
Molecular Weight:	337.37
Sequence:	Lys-Ala-{pNA}
Sequence Shortening:	KA-{pNA}
Target:	Dipeptidyl Peptidase
Pathway:	Metabolic Enzyme/Protease
Storage:	Please store the product under the recommended conditions in the Certificate of Analysis.



### BIOLOGICAL ACTIVITY

Description	Lys-Ala-pNA is hydrolytic substrate the of dipeptidyl peptidase (DPP) II with K <sub>m</sub> of 0.42 mM <sup>[1]</sup> .
IC <sub>50</sub> & Target	dipeptidyl peptidase (DPP) II <sup>[1]</sup>

### REFERENCES

[1]. Fujimura S, et al. Dipeptidyl peptidase with strict substrate specificity of an anaerobic periodontopathogen Porphyromonas gingivalis. FEMS Microbiol Lett. 2002 Mar 19;209(1):127-31.

**Caution: Product has not been fully validated for medical applications. For research use only.**

Tel: 609-228-6898

Fax: 609-228-5909

E-mail: tech@MedChemExpress.com

Address: 1 Deer Park Dr, Suite Q, Monmouth Junction, NJ 08852, USA