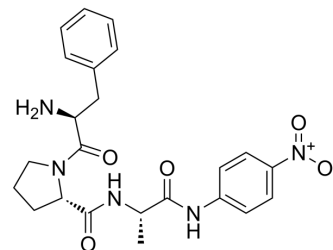


## Phe-Pro-Ala-pNA

Cat. No.:	HY-P4470
CAS No.:	201738-99-0
Molecular Formula:	C <sub>23</sub> H <sub>27</sub> N <sub>5</sub> O <sub>5</sub>
Molecular Weight:	453.49
Sequence:	Phe-Pro-{Ala-pNA}
Sequence Shortening:	FP-{Ala-pNA}
Target:	Ser/Thr Protease
Pathway:	Metabolic Enzyme/Protease
Storage:	Sealed storage, away from moisture and light
	Powder    -80°C    2 years
	-20°C    1 year

\* In solvent : -80°C, 6 months; -20°C, 1 month (sealed storage, away from moisture and light)



### SOLVENT & SOLUBILITY

#### In Vitro

DMSO : ≥ 250 mg/mL (551.28 mM)

\* "≥" means soluble, but saturation unknown.

	Solvent Concentration	Mass	1 mg	5 mg	10 mg
Preparing Stock Solutions	1 mM		2.2051 mL	11.0256 mL	22.0512 mL
	5 mM		0.4410 mL	2.2051 mL	4.4102 mL
	10 mM		0.2205 mL	1.1026 mL	2.2051 mL

Please refer to the solubility information to select the appropriate solvent.

### BIOLOGICAL ACTIVITY

#### Description

Phe-Pro-Ala-pNA is a chromogenic substrate of tripeptidyl peptidase. Phe-Pro-Ala-pNA can be used to test tripeptidyl peptidase activity<sup>[1]</sup>.

### REFERENCES

[1]. Reichard U, et, al. Sedolisins, a new class of secreted proteases from *Aspergillus fumigatus* with endoprotease or tripeptidyl-peptidase activity at acidic pHs. Appl Environ Microbiol. 2006 Mar;72(3):1739-48.

---

**Caution: Product has not been fully validated for medical applications. For research use only.**

Tel: 609-228-6898

Fax: 609-228-5909

E-mail: [tech@MedChemExpress.com](mailto:tech@MedChemExpress.com)

Address: 1 Deer Park Dr, Suite Q, Monmouth Junction, NJ 08852, USA