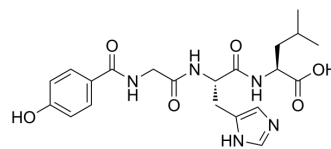


## p-Hydroxyhippuryl-His-Leu

Cat. No.:	HY-P4471
CAS No.:	77697-23-5
Molecular Formula:	C <sub>21</sub> H <sub>27</sub> N <sub>5</sub> O <sub>6</sub>
Molecular Weight:	445.47
Sequence:	{p-Hydroxyhippuryl}-His-Leu
Sequence Shortening:	{p-Hydroxyhippuryl}-HL
Target:	Angiotensin-converting Enzyme (ACE)
Pathway:	Metabolic Enzyme/Protease
Storage:	Please store the product under the recommended conditions in the Certificate of Analysis.



### BIOLOGICAL ACTIVITY

Description	p-Hydroxyhippuryl-His-Leu is a peptide substrate of angiotensin-converting enzyme (ACE) <sup>[1]</sup> .
-------------	--

### REFERENCES

[1]. Kasahara Y. New advancement of enzymatic methodologies in clinical laboratory analysis. J Clin Lab Anal. 1994;8(1):35-43.

**Caution: Product has not been fully validated for medical applications. For research use only.**

Tel: 609-228-6898

Fax: 609-228-5909

E-mail: tech@MedChemExpress.com

Address: 1 Deer Park Dr, Suite Q, Monmouth Junction, NJ 08852, USA