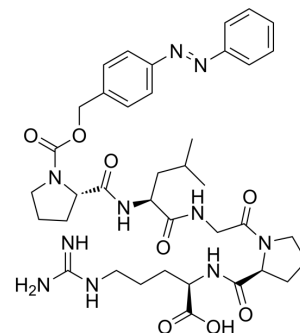


Pz-Pro-Leu-Gly-Pro-d-Arg

| | |
|----------------------|---|
| Cat. No.: | HY-P4474 |
| CAS No.: | 17011-78-8 |
| Molecular Formula: | C ₃₈ H ₅₂ N ₁₀ O ₈ |
| Molecular Weight: | 776.88 |
| Sequence: | {Pz-Pro}-Leu-Gly-Pro-{d-Arg} |
| Sequence Shortening: | {Pz-Pro}-LGP-{d-Arg} |
| Target: | Bacterial |
| Pathway: | Anti-infection |
| Storage: | Please store the product under the recommended conditions in the Certificate of Analysis. |



BIOLOGICAL ACTIVITY

| | |
|-------------|--|
| Description | Pz-Pro-Leu-Gly-Pro-d-Arg is a synthetic substrate of bacterial collagenase. Pz-Pro-Leu-Gly-Pro-d-Arg can be used to test bacterial collagenase activity ^[1] . |
|-------------|--|

REFERENCES

[1]. Takami H, et, al. Substrate specificity of thermostable alkaline protease from *Bacillus* sp. No. AH-101. *Biosci Biotechnol Biochem.* 1992 Feb;56(2):333-4.

Caution: Product has not been fully validated for medical applications. For research use only.

Tel: 609-228-6898

Fax: 609-228-5909

E-mail: tech@MedChemExpress.com

Address: 1 Deer Park Dr, Suite Q, Monmouth Junction, NJ 08852, USA