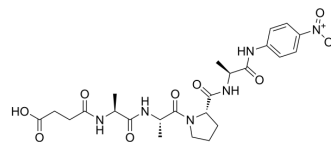


Suc-AAPA-pNA

Cat. No.:	HY-P4476
CAS No.:	72682-69-0
Molecular Formula:	C ₂₄ H ₃₂ N ₆ O ₉
Molecular Weight:	548.55
Sequence:	{Suc-Ala}-Ala-Pro-{Ala-pNA}
Sequence Shortening:	{Suc-Ala}-AP-{Ala-pNA}
Target:	Ser/Thr Protease
Pathway:	Metabolic Enzyme/Protease
Storage:	Please store the product under the recommended conditions in the Certificate of Analysis.



BIOLOGICAL ACTIVITY

Description	Suc-AAPA-pNA is a substrate of chymotrypsin Aα. Suc-AAPA-pNA can be used to test chymotrypsin Aα activity ^[1] .
-------------	--

REFERENCES

[1]. Qasim MA, et, al. Thermodynamic criterion for the conformation of P1 residues of substrates and of inhibitors in complexes with serine proteinases. Biochemistry. 1999 Jun 1;38(22):7142-50.

Caution: Product has not been fully validated for medical applications. For research use only.

Tel: 609-228-6898

Fax: 609-228-5909

E-mail: tech@MedChemExpress.com

Address: 1 Deer Park Dr, Suite Q, Monmouth Junction, NJ 08852, USA