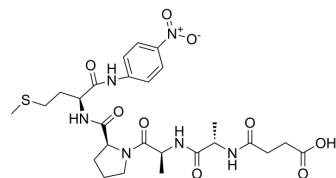


Suc-AAPM-pNA

Cat. No.:	HY-P4489
CAS No.:	72682-73-6
Molecular Formula:	C ₂₆ H ₃₆ N ₆ O ₉ S
Molecular Weight:	608.66
Sequence:	{Suc-Ala}-Ala-Pro-{Met-pNA}
Sequence Shortening:	{Suc-Ala}-AP-{Met-pNA}
Target:	Others
Pathway:	Others
Storage:	Please store the product under the recommended conditions in the Certificate of Analysis.



BIOLOGICAL ACTIVITY

Description

Suc-AAPM-pNA is a sensitive substrate for the determination of human pancreatic elastase activity^[1].

REFERENCES

[1]. M B Yaffe, et al. Sequence-specific and phosphorylation-dependent proline isomerization: a potential mitotic regulatory mechanism. Science. 1997 Dec 12;278(5345):1957-60.

Caution: Product has not been fully validated for medical applications. For research use only.

Tel: 609-228-6898

Fax: 609-228-5909

E-mail: tech@MedChemExpress.com

Address: 1 Deer Park Dr, Suite Q, Monmouth Junction, NJ 08852, USA