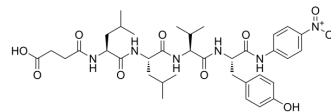


Suc-Leu-Leu-Val-Tyr-pNA

Cat. No.:	HY-P4491
CAS No.:	1926163-44-1
Molecular Formula:	C ₃₆ H ₅₀ N ₆ O ₁₀
Molecular Weight:	726.82
Sequence:	{Suc-Leu}-Leu-Val-{Tyr-pNA}
Sequence Shortening:	{Suc-Leu}-LV-{Tyr-pNA}
Target:	Others
Pathway:	Others
Storage:	Please store the product under the recommended conditions in the Certificate of Analysis.



BIOLOGICAL ACTIVITY

Description	Suc-Leu-Leu-Val-Tyr-pNA is a chymotrypsin-like chromogenic substrate that can be used to detect chymotrypsin enzymatic activity ^[1] .
-------------	--

REFERENCES

[1]. Ahooghalandari P, et al. Mutations in Arg143 and Lys192 of the Human Mast Cell Chymase Markedly Affect the Activity of Five Potent Human Chymase Inhibitors. PLoS One. 2013 Jun 19;8(6):e65988.

Caution: Product has not been fully validated for medical applications. For research use only.

Tel: 609-228-6898

Fax: 609-228-5909

E-mail: tech@MedChemExpress.com

Address: 1 Deer Park Dr, Suite Q, Monmouth Junction, NJ 08852, USA