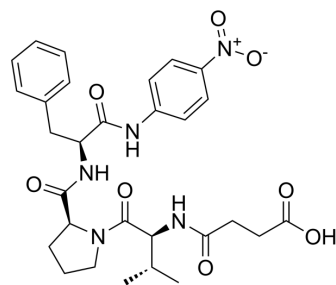


Suc-Val-Pro-Phe-pNA

Cat. No.:	HY-P4494
CAS No.:	95192-11-3
Molecular Formula:	C ₂₉ H ₃₅ N ₅ O ₈
Molecular Weight:	581.62
Sequence:	{Suc-Val}-Pro-{Phe-pNA}
Sequence Shortening:	{Suc-Val}-P-{Phe-pNA}
Target:	Cathepsin
Pathway:	Metabolic Enzyme/Protease
Storage:	Please store the product under the recommended conditions in the Certificate of Analysis.



BIOLOGICAL ACTIVITY

Description	Suc-Val-Pro-Phe-pNA is a substrate for cathepsin G and can be used to detect the activity of this enzyme ^[1] .
-------------	---

REFERENCES

[1]. Gladysheva IP, et al. Interaction between duodenase, a proteinase with dual specificity, and soybean inhibitors of Bowman-Birk and Kunitz type. Biochemistry (Mosc). 1999 Nov;64(11):1244-9.

Caution: Product has not been fully validated for medical applications. For research use only.

Tel: 609-228-6898

Fax: 609-228-5909

E-mail: tech@MedChemExpress.com

Address: 1 Deer Park Dr, Suite Q, Monmouth Junction, NJ 08852, USA