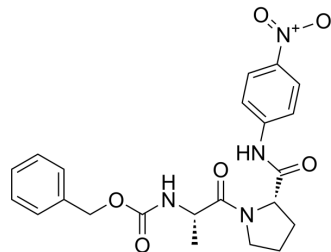


## Z-Ala-Pro-pNA

Cat. No.:	HY-P4498
CAS No.:	66382-56-7
Molecular Formula:	C <sub>22</sub> H <sub>24</sub> N <sub>4</sub> O <sub>6</sub>
Molecular Weight:	440.45
Sequence:	Z-Ala-{Pro-pNA}
Sequence Shortening:	Z-A-{Pro-pNA}
Target:	Others
Pathway:	Others
Storage:	Please store the product under the recommended conditions in the Certificate of Analysis.



### BIOLOGICAL ACTIVITY

Description	Z-Ala-Pro-pNA is an endopeptidase substrate and can be used to detect the activity of this enzyme <sup>[1]</sup> .
-------------	--

### REFERENCES

[1]. Abbott CA, et al. Cloning, expression and chromosomal localization of a novel human dipeptidyl peptidase (DPP) IV homolog, DPP8. Eur J Biochem. 2000 Oct;267(20):6140-50.

**Caution: Product has not been fully validated for medical applications. For research use only.**

Tel: 609-228-6898

Fax: 609-228-5909

E-mail: tech@MedChemExpress.com

Address: 1 Deer Park Dr, Suite Q, Monmouth Junction, NJ 08852, USA