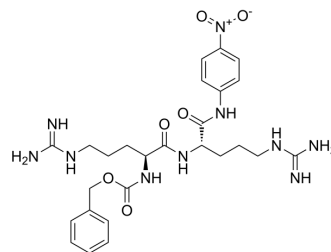


## Z-Arg-Arg-pNA

Cat. No.:	HY-P4500
CAS No.:	122630-71-1
Molecular Formula:	C <sub>26</sub> H <sub>36</sub> N <sub>10</sub> O <sub>6</sub>
Molecular Weight:	584.63
Sequence:	Z-Arg-{Arg-pNA}
Sequence Shortening:	Z-R-{Arg-pNA}
Target:	Cathepsin
Pathway:	Metabolic Enzyme/Protease
Storage:	Please store the product under the recommended conditions in the Certificate of Analysis.



### BIOLOGICAL ACTIVITY

Description	Z-Arg-Arg-pNA is a substrate for cathepsin B and can be used to detect this enzyme activity <sup>[1]</sup> .
-------------	--

### REFERENCES

[1]. Filippova IY, et al. New Glutamine-Containing Substrates for the Assay of Cysteine Peptidases From the C1 Papain Family. *Front Mol Biosci.* 2020 Oct 22;7:578758.

**Caution: Product has not been fully validated for medical applications. For research use only.**

Tel: 609-228-6898

Fax: 609-228-5909

E-mail: tech@MedChemExpress.com

Address: 1 Deer Park Dr, Suite Q, Monmouth Junction, NJ 08852, USA