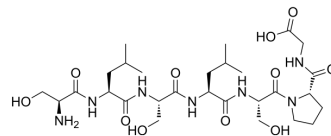


SLSLSPG

Cat. No.:	HY-P4510
CAS No.:	943235-75-4
Molecular Formula:	C ₂₈ H ₄₉ N ₇ O ₁₁
Molecular Weight:	659.73
Sequence:	H-Ser-Leu-Ser-Leu-Ser-Pro-Gly-OH
Sequence Shortening:	SLSLSPG
Target:	Others
Pathway:	Others
Storage:	Please store the product under the recommended conditions in the Certificate of Analysis.



BIOLOGICAL ACTIVITY

Description	SLSLSPG can be obtained from the C-end of the heavy chain of human Igy-1. SLSLSPG is a common variant in IgG ^[1] .
-------------	---

Caution: Product has not been fully validated for medical applications. For research use only.

Tel: 609-228-6898

Fax: 609-228-5909

E-mail: tech@MedChemExpress.com

Address: 1 Deer Park Dr, Suite Q, Monmouth Junction, NJ 08852, USA