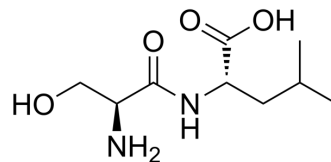


Serylleucine

Cat. No.:	HY-P4511
CAS No.:	6665-16-3
Molecular Formula:	C ₉ H ₁₈ N ₂ O ₄
Molecular Weight:	218.25
Sequence:	H-Ser-Leu-OH
Sequence Shortening:	SL
Target:	Others
Pathway:	Others
Storage:	Please store the product under the recommended conditions in the Certificate of Analysis.



BIOLOGICAL ACTIVITY

Description

Serylleucine is a dipeptide. Serylleucine's core 1 o-glycosylated peptide (SLC1G) can be detected in urine as a metabolite and is a biomarker in TB studies^[1].

Caution: Product has not been fully validated for medical applications. For research use only.

Tel: 609-228-6898

Fax: 609-228-5909

E-mail: tech@MedChemExpress.com

Address: 1 Deer Park Dr, Suite Q, Monmouth Junction, NJ 08852, USA