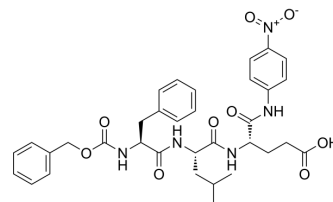


Z-Phe-Leu-Glu-pNA

Cat. No.:	HY-P4516
CAS No.:	104634-10-8
Molecular Formula:	C ₃₄ H ₃₉ N ₅ O ₉
Molecular Weight:	661.7
Sequence:	Z-Phe-Leu-{Glu-pNA}
Sequence Shortening:	Z-FL-{Glu-pNA}
Target:	Others
Pathway:	Others
Storage:	Please store the product under the recommended conditions in the Certificate of Analysis.



BIOLOGICAL ACTIVITY

Description	Z-Phe-Leu-Glu-pNA is a chromogenic substrate for glutamyl endopeptidases. Z-Phe-Leu-Glu-pNA has been used as a synthetic substrate in the study of proteolytic enzymes, including trypsin treatment, subtilisin and chymotrypsin. Z-Phe-Leu-Glu-pNA plays an important role in hormone disorders such as prostate cancer and breast cancer ^{[1][2]} .
IC ₅₀ & Target	others

REFERENCES

- [1]. Wei Ye, et al. Characterization of the glutamate-specific endopeptidase from *Bacillus licheniformis* expressed in *Escherichia coli*. *J Biotechnol.* 2013 Oct 10;168(1):40-5.
- [2]. Wei Ye, et al. A new strategy for recovery of two peptides without Glu employing glutamate-specific endopeptidase from *Bacillus licheniformis*. *Enzyme Microb Technol.* 2014 Jan 10;54:25-31.

Caution: Product has not been fully validated for medical applications. For research use only.

Tel: 609-228-6898

Fax: 609-228-5909

E-mail: tech@MedChemExpress.com

Address: 1 Deer Park Dr, Suite Q, Monmouth Junction, NJ 08852, USA