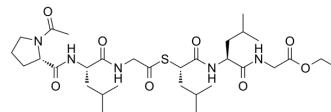


Ac-Pro-Leu-Gly-[(S)-2-mercapto-4-methyl-pentanoyl]-Leu-Gly-OEt

Cat. No.:	HY-P4521
CAS No.:	99828-55-4
Molecular Formula:	C ₃₁ H ₅₃ N ₅ O ₈ S
Molecular Weight:	655.85
Sequence:	Ac-Pro-Leu-{Gly-[(S)-2-mercapto-4-methyl-pentanoyl]}-Leu-{Gly-OEt}
Sequence Shortening:	Ac-PL-{Gly-[(S)-2-mercapto-4-methyl-pentanoyl]}-L-{Gly-OEt}
Target:	MMP
Pathway:	Metabolic Enzyme/Protease
Storage:	Please store the product under the recommended conditions in the Certificate of Analysis.



BIOLOGICAL ACTIVITY

Description	Ac-Pro-Leu-Gly-[(S)-2-mercapto-4-methyl-pentanoyl]-Leu-Gly-OEt is a MMP12 substrate, and can be used to detect MMP12 enzyme activity ^[1] .
-------------	---

REFERENCES

[1]. Dong XW, et al. Covalent docking modelling-based discovery of tripeptidyl epoxyketone proteasome inhibitors composed of aliphatic-heterocycles. Eur J Med Chem. 2019 Feb 15;164:602-614.

Caution: Product has not been fully validated for medical applications. For research use only.

Tel: 609-228-6898

Fax: 609-228-5909

E-mail: tech@MedChemExpress.com

Address: 1 Deer Park Dr, Suite Q, Monmouth Junction, NJ 08852, USA