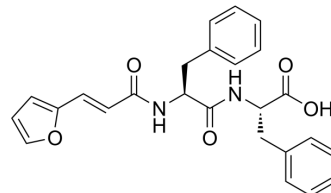


FA-Phe-Phe

Cat. No.:	HY-P4524
CAS No.:	83661-95-4
Molecular Formula:	C ₂₅ H ₂₄ N ₂ O ₅
Molecular Weight:	432.47
Sequence:	{FA}-Phe-Phe
Sequence Shortening:	{FA}-FF
Target:	Angiotensin-converting Enzyme (ACE)
Pathway:	Metabolic Enzyme/Protease
Storage:	Please store the product under the recommended conditions in the Certificate of Analysis.



BIOLOGICAL ACTIVITY

Description	FA-Phe-Phe is a furylacryloyl (fa)-amino acid derivative, targeting to Angiotensin-converting Enzyme (ACE). FA-Phe-Phe is also a specific substrate of Cathepsin A ^{[1][2]} .
--------------------	--

REFERENCES

- [1]. Mayer M, et al. Mapping the active site of angiotensin-converting enzyme by transferred NOE spectroscopy. *J Med Chem*. 2000 Jun 1;43(11):2093-9.
- [2]. Ostrowska H, et al. Lactacystin, a specific inhibitor of the proteasome, inhibits human platelet lysosomal cathepsin A-like enzyme. *Biochem Biophys Res Commun*. 1997 May 29;234(3):729-32.

Caution: Product has not been fully validated for medical applications. For research use only.

Tel: 609-228-6898

Fax: 609-228-5909

E-mail: tech@MedChemExpress.com

Address: 1 Deer Park Dr, Suite Q, Monmouth Junction, NJ 08852, USA