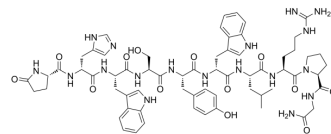


(D-His2,D-Trp6)-LHRH

Cat. No.:	HY-P4534
CAS No.:	321709-34-6
Molecular Formula:	C ₆₄ H ₈₂ N ₁₈ O ₁₃
Molecular Weight:	1311.45
Sequence:	{Pyr}-{d-His}-Trp-Ser-Tyr-{d-Trp}-Leu-Arg-Pro-Gly-NH ₂
Sequence Shortening:	{Pyr}-{d-His}-WSY-{d-Trp}-LRPG-NH ₂
Target:	GnRH Receptor
Pathway:	GPCR/G Protein
Storage:	Please store the product under the recommended conditions in the Certificate of Analysis.



SOLVENT & SOLUBILITY

In Vitro

DMSO : 100 mg/mL (76.25 mM; Need ultrasonic)

Concentration	Solvent	Mass	1 mg	5 mg	10 mg
			1 mM	0.7625 mL	3.8126 mL
5 mM			0.1525 mL	0.7625 mL	1.5250 mL
10 mM			0.0763 mL	0.3813 mL	0.7625 mL

Please refer to the solubility information to select the appropriate solvent.

BIOLOGICAL ACTIVITY

Description

(D-His2,D-Trp6)-LHRH ((D-His2)-Triptorelin) is a polypeptide that can be found by peptide screening. Peptide screening is a research tool that pools active peptides primarily by immunoassay. Peptide screening can be used for protein interaction, functional analysis, epitope screening, especially in the field of agent research and development^[1].

REFERENCES

[1]. Birnbaum S, et al. Peptide screening. *Current Opinion in Biotechnology*, 1992, 3(1): 49-54.

Caution: Product has not been fully validated for medical applications. For research use only.

Tel: 609-228-6898

Fax: 609-228-5909

E-mail: tech@MedChemExpress.com

Address: 1 Deer Park Dr, Suite Q, Monmouth Junction, NJ 08852, USA