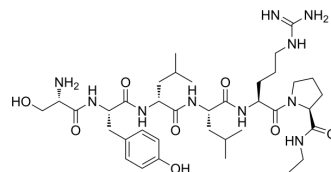


(D-Leu6,Pro-NHEt9)-LHRH (4-9)

Cat. No.:	HY-P4538
CAS No.:	202333-85-5
Molecular Formula:	C ₃₇ H ₆₂ N ₁₀ O ₈
Molecular Weight:	774.95
Sequence:	Ser-Tyr-[d-Leu]-Leu-Arg-Pro-[NHet]
Sequence Shortening:	SY-[d-Leu]-LRP-[NHet]
Target:	GnRH Receptor
Pathway:	GPCR/G Protein
Storage:	Please store the product under the recommended conditions in the Certificate of Analysis.



BIOLOGICAL ACTIVITY

Description

(D-Leu6,Pro-NHEt9)-LHRH (4-9) is a polypeptide that can be found by peptide screening. Peptide screening is a research tool that pools active peptides primarily by immunoassay. Peptide screening can be used for protein interaction, functional analysis, epitope screening, especially in the field of agent research and development^[1].

REFERENCES

[1]. Birnbaum S, et al. Peptide screening. *Current Opinion in Biotechnology*, 1992, 3(1): 49-54.

Caution: Product has not been fully validated for medical applications. For research use only.

Tel: 609-228-6898

Fax: 609-228-5909

E-mail: tech@MedChemExpress.com

Address: 1 Deer Park Dr, Suite Q, Monmouth Junction, NJ 08852, USA