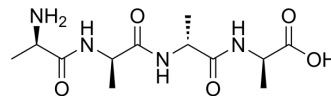


H-D-Ala-D-Ala-D-Ala-D-Ala-OH

| | |
|----------------------|---|
| Cat. No.: | HY-P4549 |
| CAS No.: | 926-78-3 |
| Molecular Formula: | C ₁₂ H ₂₂ N ₄ O ₅ |
| Molecular Weight: | 302.33 |
| Sequence: | {d-Ala}-{d-Ala}-{d-Ala}-{d-Ala} |
| Sequence Shortening: | {d-Ala}-{d-Ala}-{d-Ala}-{d-Ala} |
| Target: | Aminopeptidase |
| Pathway: | Metabolic Enzyme/Protease |
| Storage: | Please store the product under the recommended conditions in the Certificate of Analysis. |



BIOLOGICAL ACTIVITY

| | |
|-------------|---|
| Description | H-D-Ala-D-Ala-D-Ala-D-Ala-OH is a substrate for D-aminopeptidase ^[1] . |
|-------------|---|

REFERENCES

[1]. Cheggour A, et al. The dppA gene of *Bacillus subtilis* encodes a new D-aminopeptidase. *Mol Microbiol.* 2000 Nov;38(3):504-13.

Caution: Product has not been fully validated for medical applications. For research use only.

Tel: 609-228-6898

Fax: 609-228-5909

E-mail: tech@MedChemExpress.com

Address: 1 Deer Park Dr, Suite Q, Monmouth Junction, NJ 08852, USA