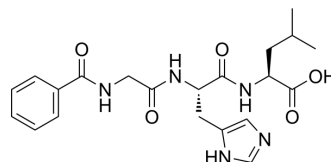


Hippuryl-His-Leu-OH

Cat. No.:	HY-P4551
CAS No.:	31373-65-6
Molecular Formula:	C ₂₁ H ₂₇ N ₅ O ₅
Molecular Weight:	429.47
Sequence:	Hippuryl-His-Leu-OH
Sequence Shortening:	Hippuryl-HL-OH
Target:	Amino Acid Derivatives; Angiotensin-converting Enzyme (ACE)
Pathway:	Others; Metabolic Enzyme/Protease
Storage:	Please store the product under the recommended conditions in the Certificate of Analysis.



BIOLOGICAL ACTIVITY

Description	Hippuryl-His-Leu-OH is a substrate for detecting the activity of angiotensin I converting enzyme. The His-Leu released by Hippuryl-His-Leu-OH can react with o-phthalaldehyde or Fluorescamine (HY-D0715) for fluorescence detection ^{[1][2][3]} .
--------------------	---

REFERENCES

- [1]. Nishimura K, et al. Purification of angiotensin I-converting enzyme from human lung. *Biochim Biophys Acta*. 1977 Aug 11;483(2):398-408.
- [2]. Santos RA, et al. An improved fluorometric assay of rat serum and plasma converting enzyme. *Hypertension*. 1985 Mar-Apr;7(2):244-52.
- [3]. Horiuchi M, et al. Method for determination of angiotensin-converting enzyme activity in blood and tissue by high-performance liquid chromatography. *J Chromatogr*. 1982 Dec 10;233:123-30.

Caution: Product has not been fully validated for medical applications. For research use only.

Tel: 609-228-6898

Fax: 609-228-5909

E-mail: tech@MedChemExpress.com

Address: 1 Deer Park Dr, Suite Q, Monmouth Junction, NJ 08852, USA