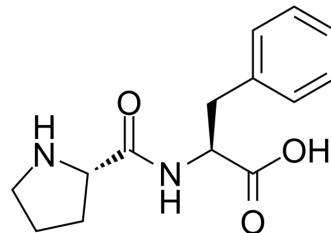


H-Pro-Phe-OH

Cat. No.:	HY-P4560
CAS No.:	13589-02-1
Molecular Formula:	C ₁₄ H ₁₈ N ₂ O ₃
Molecular Weight:	262.3
Sequence:	Pro-Phe
Sequence Shortening:	PF
Target:	Angiotensin-converting Enzyme (ACE)
Pathway:	Metabolic Enzyme/Protease
Storage:	Please store the product under the recommended conditions in the Certificate of Analysis.



BIOLOGICAL ACTIVITY

Description

H-Pro-Phe-OH is a dipeptide containing proline and phenylalanine, which can serve as a substrate for prolinase. H-Pro-Phe-OH can also be used for polypeptide synthesis, where phenylalanine is an aromatic amino acid that can inhibit the activity of Angiotensin-converting enzyme (ACE, HY-P2983)^{[1][2]}.

REFERENCES

[1]. Majumder K, et al. Angiotensin I converting enzyme inhibitory peptides from simulated in vitro gastrointestinal digestion of cooked eggs. J Agric Food Chem. 2009 Jan 28;57(2):471-7.

[2]. Priestman DA, et al. Prolinase and non-specific dipeptidase of human kidney. Biochem J. 1985 Nov 1;231(3):689-94.

Caution: Product has not been fully validated for medical applications. For research use only.

Tel: 609-228-6898

Fax: 609-228-5909

E-mail: tech@MedChemExpress.com

Address: 1 Deer Park Dr, Suite Q, Monmouth Junction, NJ 08852, USA