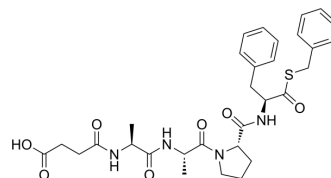


## Suc-Ala-Ala-Pro-Phe-SBzl

Cat. No.:	HY-P4580
CAS No.:	80651-95-2
Molecular Formula:	C <sub>31</sub> H <sub>38</sub> N <sub>4</sub> O <sub>7</sub> S
Molecular Weight:	610.72
Sequence:	Suc-Ala-Ala-Pro-Phe-SBzl
Sequence Shortening:	Suc-AAPF-SBzl
Target:	Proteasome
Pathway:	Metabolic Enzyme/Protease
Storage:	Please store the product under the recommended conditions in the Certificate of Analysis.



### BIOLOGICAL ACTIVITY

#### Description

Suc-Ala-Ala-Pro-Phe-SBzl can be used as the substrate of rat intestinal mast cell protease (RMCP I), rat skeletal muscle mast cell protease (RMCP II) and Chymotrypsin (HY-108910). Suc-Ala-Ala-Pro-Phe-SBzl can be hydrolyzed by glycine (R208G)<sup>[1][2]</sup>.

### REFERENCES

- [1]. Harper JW, et al. Reaction of peptide thiobenzyl esters with mammalian chymotrypsinlike enzymes: a sensitive assay method. *Anal Biochem.* 1981 Dec;118(2):382-7.
- [2]. Caputo A, et al. Conversion of the substrate specificity of mouse proteinase granzyme B. *Nat Struct Biol.* 1994 Jun;1(6):364-7.

**Caution: Product has not been fully validated for medical applications. For research use only.**

Tel: 609-228-6898

Fax: 609-228-5909

E-mail: tech@MedChemExpress.com

Address: 1 Deer Park Dr, Suite Q, Monmouth Junction, NJ 08852, USA