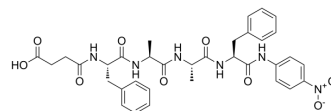


Suc-Phe-Ala-Ala-Phe-pNA

Cat. No.:	HY-P4582
CAS No.:	110906-89-3
Molecular Formula:	C ₃₄ H ₃₈ N ₆ O ₉
Molecular Weight:	674.7
Sequence:	Suc-Phe-Ala-Ala-Phe-pNA
Sequence Shortening:	Suc-FAAF-pNA
Target:	Others
Pathway:	Others
Storage:	Please store the product under the recommended conditions in the Certificate of Analysis.



BIOLOGICAL ACTIVITY

Description

Suc-Phe-Ala-Ala-Phe-pNA (Suc-FAAF-pNA) is a synthetic polypeptide that can serve as a substrate for the protease from *Aeribacillus pallidus* VP3 (SPVP), the serine alkaline protease from *Caldicoprobacter guelmensis* (SAPCG) strain D2C22^T, the alcalase ultra 2.5 L and the thermolysin type X^[1].

REFERENCES

[1]. Mechri S, et al. Characterization of a novel protease from *Aeribacillus pallidus* strain VP3 with potential biotechnological interest. *Int J Biol Macromol.* 2017 Jan;94(Pt A):221-232.

Caution: Product has not been fully validated for medical applications. For research use only.

Tel: 609-228-6898

Fax: 609-228-5909

E-mail: tech@MedChemExpress.com

Address: 1 Deer Park Dr, Suite Q, Monmouth Junction, NJ 08852, USA