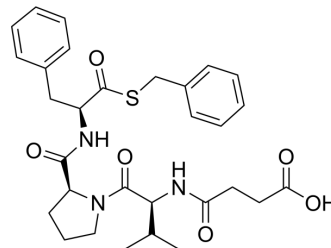


## Suc-Val-Pro-Phe-SBzl

Cat. No.:	HY-P4583
CAS No.:	95192-51-1
Molecular Formula:	C <sub>30</sub> H <sub>37</sub> N <sub>3</sub> O <sub>6</sub> S
Molecular Weight:	567.7
Sequence:	{Suc}-Val-Pro-Phe-{SBzl}
Sequence Shortening:	{Suc}-VPF-{SBzl}
Target:	Others
Pathway:	Others
Storage:	Please store the product under the recommended conditions in the Certificate of Analysis.



### BIOLOGICAL ACTIVITY

Description	Suc-Val-Pro-Phe-SBzl (succinyl-valine-proline-phenylalanine thiobenzyl ester) is an inhibitor of CatG enzymes with IC <sub>50</sub> values of 111-225 mM.
-------------	---

### REFERENCES

[1]. Brent E. Lockhart, et al. Expression, Purification, and Characterization of the Mast Cell Proteases Chymase and Cathepsin G. East Tennessee State University. 2008, 5.

**Caution: Product has not been fully validated for medical applications. For research use only.**

Tel: 609-228-6898

Fax: 609-228-5909

E-mail: tech@MedChemExpress.com

Address: 1 Deer Park Dr, Suite Q, Monmouth Junction, NJ 08852, USA