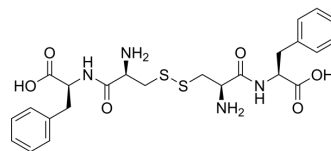


## (H-Cys-Phe-OH)<sub>2</sub> (disulfide bond)

Cat. No.:	HY-P4597
CAS No.:	62130-80-7
Molecular Formula:	C <sub>24</sub> H <sub>30</sub> N <sub>4</sub> O <sub>6</sub> S <sub>2</sub>
Molecular Weight:	534.65
Target:	Others
Pathway:	Others
Storage:	Please store the product under the recommended conditions in the Certificate of Analysis.



### BIOLOGICAL ACTIVITY

#### Description

(H-Cys-Phe-OH)<sub>2</sub> (disulfide bond) is a polypeptide that can be found by peptide screening. Peptide screening is a research tool that pools active peptides primarily by immunoassay. Peptide screening can be used for protein interaction, functional analysis, epitope screening, especially in the field of agent research and development<sup>[1]</sup>.

### REFERENCES

[1]. Birnbaum S, et al. Peptide screening. *Current Opinion in Biotechnology*, 1992, 3(1): 49-54.

**Caution: Product has not been fully validated for medical applications. For research use only.**

Tel: 609-228-6898

Fax: 609-228-5909

E-mail: tech@MedChemExpress.com

Address: 1 Deer Park Dr, Suite Q, Monmouth Junction, NJ 08852, USA